

# Preparing for the Unthinkable

## *A Process for Emergency Preparedness*

KAHCF /KCAL 2024 Annual Meeting  
Nov. 19<sup>th</sup> , 2024

Dave Carney BS, MEP  
Readiness & Response Coordinator  
Kentucky Department for Public Health

© Marko Korosec/Solent News

1

## Overview

- Weather Patterns
- Storm Approach and Initial Response –  
First 72 hours
- Preparedness 101 - PLANNING
- Response Coordination – ESF-8

Mayfield, KY  
Dec. 11<sup>th</sup>, 2021

2

# Hope is Not a Plan

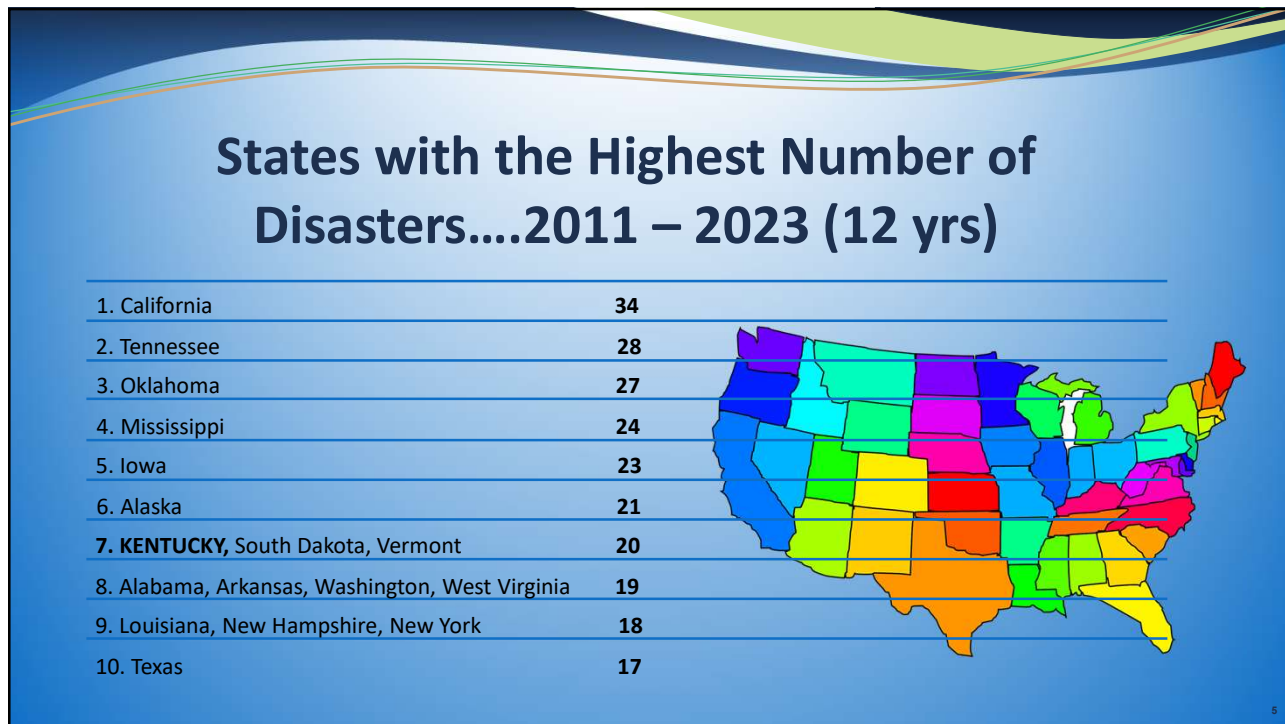
3

# Its not a matter of if, but when..

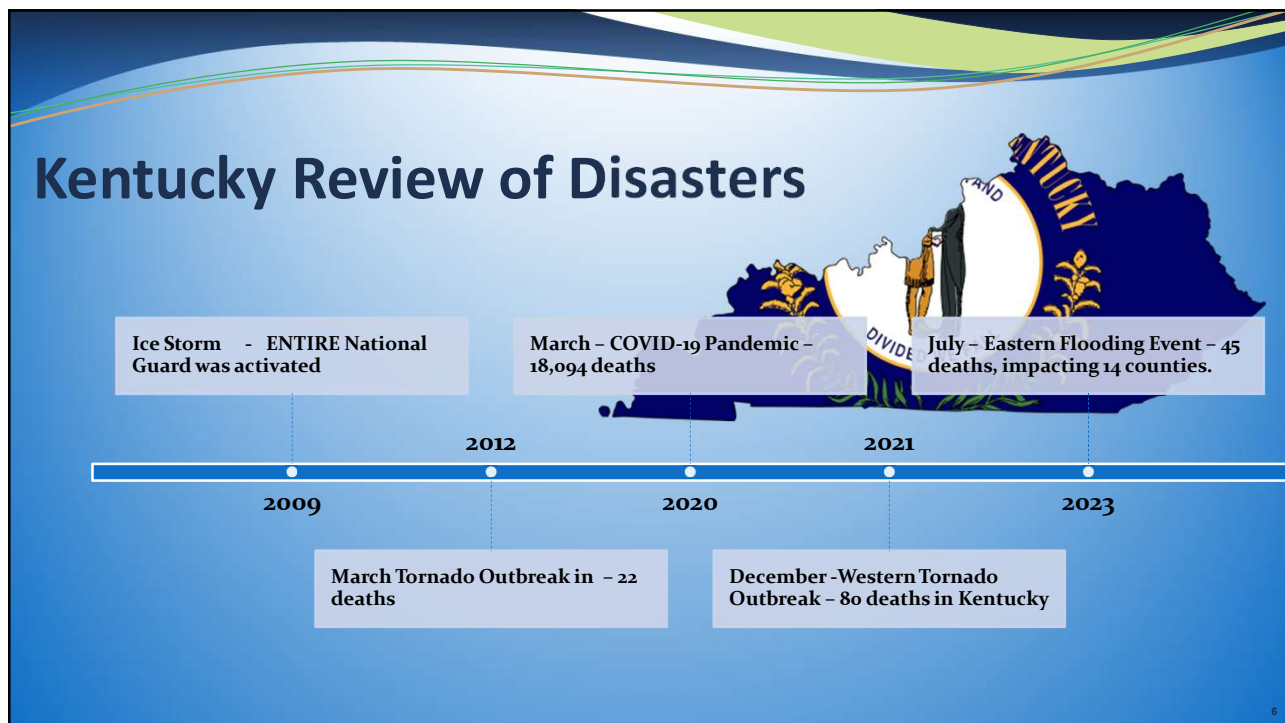
Billion- dollar events impacting the United States from 1980-2023 (43 year span)

DISASTER	EVENTS	PERCENT FREQUENCY	TOTAL COSTS	DEATHS
Droughts	31	8.2%	\$352.9B	4522
Flooding	44	11.7%	\$196.6B	738
<b>Severe Storm</b>	<b>186</b>	<b>49.5%</b>	<b>\$455.1B</b>	<b>2094</b>
Freeze	9	2.4%	\$36.4B	162
Winter Storm	22	5.9%	\$98.3B	1402

4



5



6

## 2018 Hurricane Florence to hit Norfolk, VA

### 61 Evacuees coming to KENTUCKY

- Planning began – 1 day before the “guests” arrived
- Numerous Conference Calls
- Facility layout and sleeping arrangements
- Extra beds/equipment from sister facilities
- What supplies needed to bring
- Who to Notify



7

## How did this story end?

- Signature Healthcare facility in Norfolk VA was never impacted by the storm.
- Had Norfolk facility been decimated by the storm it would have made for additional planning regarding resources and additional assistance.
- **Experience is golden.** Knowing what to expect when the situation arises again.
- Real world events expose gaps that makes for better planning.
- **IDENTIFY HAZARDS** which impact your facility. Evacuees impacted our facility. Time to update!
- **We can't do it alone and there is help if we know where to ask and who to ask.**



8

## How do we plan ???

### The Event ----- The All Hazard Approach -----

- Disasters
  - Floods, Ice storms, Tornados, Hurricanes .....
- Man made
  - Anthrax attack, Cyber Threats, ACTIVE SHOOTER
- Planned Events
  - NASCAR, Thunder Over Louisville, Derby.....
- Biological
  - Infectious Disease, Chemical spill, Air Release....



9

9

## CONSIDER THIS.....

### Residents & Staff

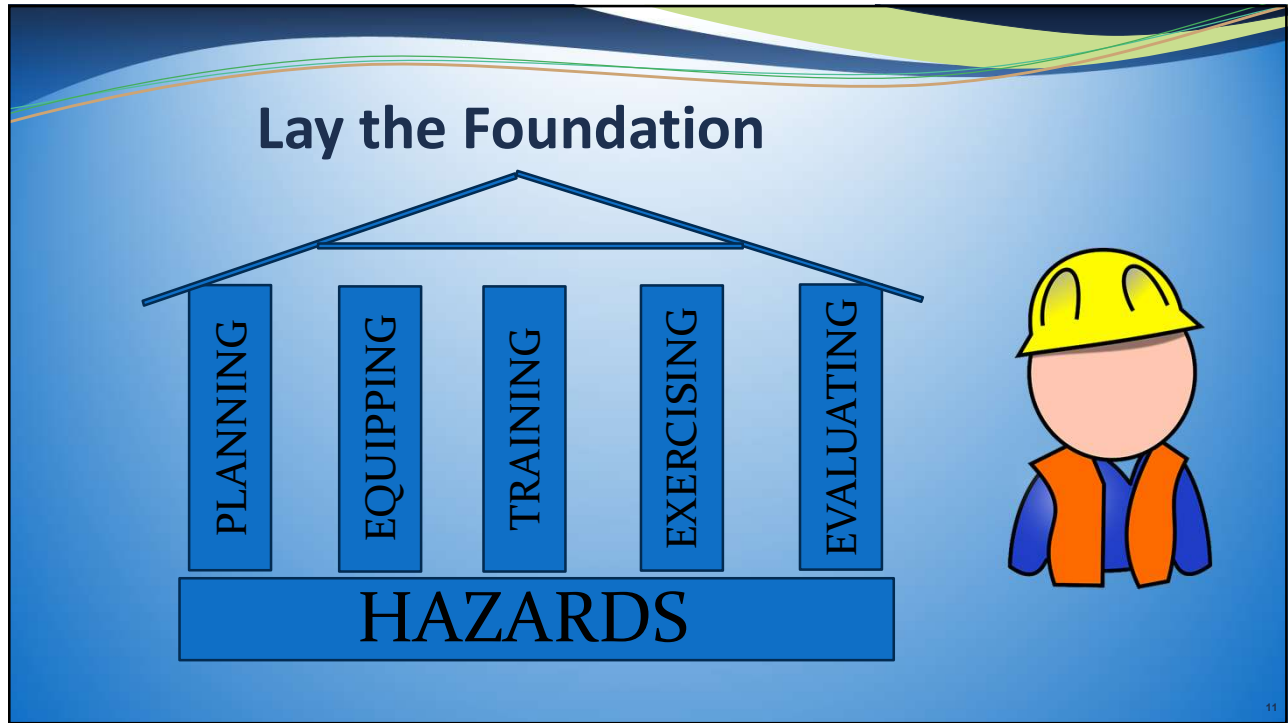
- Safety
- Family
- Accountability
- Care and Feeding
- Stress
- Health

**RETURN TO NORMAL**

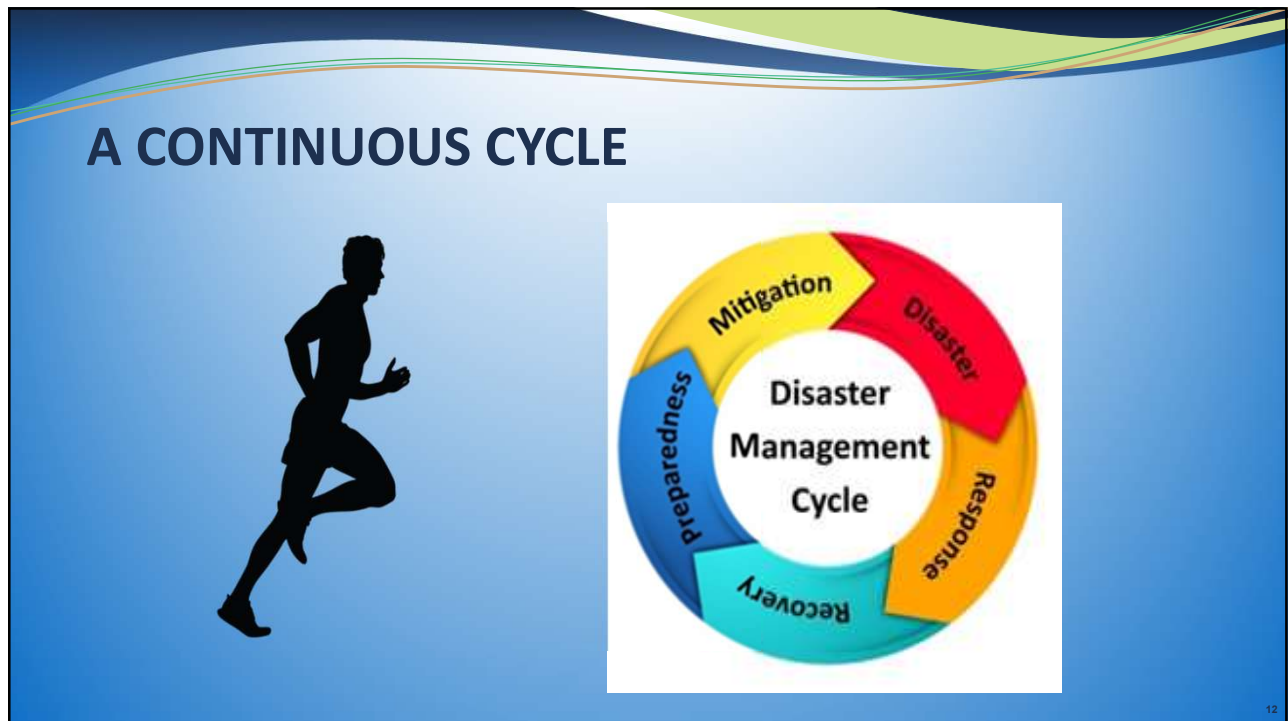


10

10



11



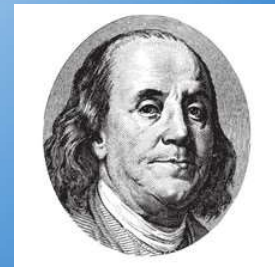
12

## Planning

### There is no one size fits all.

- Purpose
- Scope – Situations - Assumptions
- Roles
  - Administration, Departments, HR, Payroll, Ancillary Staff, Pharmacy, Dietary
  - Authority & Control
  - Line of Succession
- Response Operations
  - Activation
  - Demobilization and Recovery
- COOP (Preparedness Term)
- Safety Tips
- Subsistence Needs (what is on hand)
- Testing and Exercises (frequency)
- **COMMUNICATIONS**
- Resident and Staff Tracking
- Evacuation Procedures
- Sheltering in Place

“If you fail to plan,  
you are  
planning to  
fail.”



13

13

## Equipping



- Who makes Decisions?
  - Administration or Corporate?
- Are staff ready for their role?
- Evaluate resources and Tools.
- Regulations, what must be done.
- Mitigate your exposure.
- Buy in!!! IMPORTANT
- Equipment needs
- Volunteer Management
- Vendor support (LESSONS LEARNED)
- Personal Preparedness

14

14

## Training

- After Hazards are identified you inform and train.
  - We can't expect our staff to know what to do unless they train.
  - Emphasize the importance.
  - Frequency Cycle
  - Ask for assistance. (there are multiple resources which are available and FREE!!)
    - Healthcare Coalitions
    - Kentucky Emergency Management
    - Local Emergency Management
    - Department of Homeland Security
- **Incident Command Course (ICS)**
    - 100.c History, Features and Principles.
    - 200.c Basic Incident Command Systems for Initial response.
    - 700.b Intro to National Incident Management system.
    - 800.d National Response Framework to whole community.

15

15

## Exercising

- Now the Hazards are identified, planning is made, we **EXERCISE!**
- **Exercise Types**
  - Discussion or Tabletop
  - Drills (low level)
  - Functional
  - Full-scale (multiple agency involvement, boots on the ground)
- **Community Involvement** – don't silo, CAN I PLAY?



16

16

# Evaluating

## After Action Reports



- Improvement Plans, what was done well, what can we improve on.
- Test plans and procedures.
- Assigning the fix and follow up.
- Understand what you're evaluating. Identify clear requirements. (DON'T ASSUME)
- Use Subject Mater Experts (SMEs) outside your organization.
- Validate training and education.
- Clarify roles and responsibilities.
- Get Feedback from PLAYERS!
- Make Some Noise About it!

17

17

## ARE YOU READY FOR THIS

Can you prepare for EVERYTHING?

Will there be failure?



Will there be a potential for failure?

18

18

# First 72 is on YOU!

WHAT IS OUR RESPONSIBILITY?

CAN I HAVE A LITTLE HELP?

LIMITED TIME AND RESOURCES



Hurricane Harvey - 2017  
Nursing Home Residence in  
Dickinson, TX were told not to  
evacuate.

19

## Remember this...

### Tracking Costs

- The most overlooked part of the disaster !!!!!
- The second most important part of the disaster !
  - Start early
  - Assign someone to track
- Every Every Expense
  - Time, equipment, contracts
  - Details- location, activity, equipment
  - Be Specific
  - **COUNTY EXPENSE THRESHOLDS**



20

# Who ya gonna call?



21

21

**KENTUCKY ESF-8 HEALTH & MEDICAL RESPONSE TEAM**

## Healthcare Preparedness Program Map – Contact Roster

Updated for FY24-25 – July 1, 2024

<p><b>Kenneth Kik</b> Program Supervisor 502.234.8392 <a href="mailto:Kenneth.Kik@ky.gov">Kenneth.Kik@ky.gov</a></p>	<p><b>Steve Hosch</b> Healthcare Preparedness Coordinator 502.382.8205 <a href="mailto:StephenR.Hosch@ky.gov">StephenR.Hosch@ky.gov</a></p>	<p><b>Amanda Hunter</b> Lead RRC HERA 502.229.1440 <a href="mailto:Amanda.Hunter@ky.gov">Amanda.Hunter@ky.gov</a></p>	<p><b>Jessica McElroy</b> RRC Northern KY 502.352.3339 <a href="mailto:Jessica.McElroy@ky.gov">Jessica.McElroy@ky.gov</a></p>	<p><b>Dave Carney</b> RRC Bluegrass HCC 502.905.9969 <a href="mailto:DavidN.Carney@ky.gov">DavidN.Carney@ky.gov</a></p>
<p><b>JT Moore</b> HPP Operations Coordinator RRC BGHCC &amp; NKYHPC 502.229.8962 <a href="mailto:Jordan.Moore@ky.gov">Jordan.Moore@ky.gov</a></p>	<p><b>BJ Newbury</b> Community Integration Coordinator HPP Outreach / Marketing 618.534.9810 <a href="mailto:Billie.Newbury@ky.gov">Billie.Newbury@ky.gov</a></p>	<p><b>Janine Edelen</b> RRC HERA RPC PHEP Region 5 502.352.3046 <a href="mailto:jedelen@ky.gov">jedelen@ky.gov</a></p>	<p><b>Northern KY Healthcare Preparedness</b></p>	
<p><b>Terri Schoebel</b> HPP Planning Specialist 502.352.5601 <a href="mailto:tmontgomeryschoebel@ky.gov">tmontgomeryschoebel@ky.gov</a></p>	<p><b>Raymond Giannini</b> HPP Communication Specialist 270.963.1052 <a href="mailto:rg9a@hotmail.com">rg9a@hotmail.com</a></p>	<p><b>Healthcare Emergency Response &amp; Advisory (HERA)</b></p>	<p><b>Bluegrass HCC</b></p>	<p><b>Eastern KY Healthcare Preparedness</b></p>
<p><b>Vickie Siedel</b> Lead RRC West KY HCC 502.352.8227 <a href="mailto:Vickie.Siedel@ky.gov">Vickie.Siedel@ky.gov</a></p>	<p><b>WesKY HCC</b></p>	<p><b>Healthcare Emergency Area 4 Resource Team (HEART)</b></p>	<p><b>Healthcare Emergency Leaders for Preparedness (HELP)</b></p>	<p><b>Christopher Cox</b> RRC Eastern KY 502.229.9152 <a href="mailto:Christopher.Cox@ky.gov">Christopher.Cox@ky.gov</a></p>
<p><b>Casey Clark</b> RRC West KY HCC HPP Training Coordinator 502.226.0837 <a href="mailto:Casey.Clark@ky.gov">Casey.Clark@ky.gov</a></p>	<p><b>James Pendergrass</b> RRC Eastern KY 502.229.3799 <a href="mailto:James.Pendergrass@ky.gov">James.Pendergrass@ky.gov</a></p>	<p><b>Yvette Coleman</b> RRC HEART HCC 502.352.5385 <a href="mailto:Yvette.Coleman@ky.gov">Yvette.Coleman@ky.gov</a></p>	<p><b>Peggy Acay</b> RRC HELP HCC 502.229.1409 <a href="mailto:Peggy.Acay@ky.gov">Peggy.Acay@ky.gov</a></p>	<p><b>Gail Timperio</b> RRC SEKY HCC 502.905.9963 <a href="mailto:CynthiaG.Timperio@ky.gov">CynthiaG.Timperio@ky.gov</a></p>

RRC = Readiness & Response Coordinator

22



23



24

## HPP Resources



### MOBILE MORGUE

- STORES 24 BODIES
- SHORE POWER OR GENERATOR
- BUMPER PULL 17'
- CAN BE USED FOR COLD STORAGE.

25

25

## Kentucky HPP



### Resources

- How is this done?
- When requesting be specific
  - What you need
  - What you are trying to do
  - How long you need it
  - Details
- What we have
  - PPE
  - Med Surge
  - Communications
  - EVACUATION EQUIPMENT

26

26




27

27


A slide with a blue background and a decorative wavy border at the top. It contains logos for KAHCF, KCAL, and KSLA. The text provides details for a 2024 Annual Meeting session on emergency preparedness, including a QR code and contact information for Dave Carney. A Bluegrass Healthcare Coalition logo is also present.

**KAHCF** ♦ **KCAL**      **KSLA**  
KENTUCKY SENIOR LIVING ASSOCIATION

**2024 Annual Meeting**  
**Session #2: Preparing for the Unthinkable: A Process for**  
**Emergency Preparedness**  
**November 19, 2024**



**Dave Carney, BS, MEP**  
Kentucky Department for Public Health  
Bluegrass Healthcare Coalition  
(502) 905-9969  
[davidn.carney@ky.gov](mailto:davidn.carney@ky.gov)



28

28